



ΕΛΛΗΝΙΚΗ ΔΗΜΟΚΡΑΤΙΑ  
HELLENIC REPUBLIC  
ΥΠΟΥΡΓΕΙΟ ΥΠΟΔΟΜΩΝ ΚΑΙ ΜΕΤΑΦΟΡΩΝ  
MINISTRY OF INFRASTRUCTURE AND TRANSPORT  
ΥΠΗΡΕΣΙΑ ΠΟΛΙΤΙΚΗΣ ΑΕΡΟΠΟΡΙΑΣ  
CIVIL AVIATION AUTHORITY  
ΤΜΗΜΑ ΠΤΗΤΙΚΗΣ ΙΚΑΝΟΤΗΤΑΣ Α/ΦΩΝ  
FLIGHT STANDARDS DIVISION

08/01/2021

... / 2 / 462

ΤΑΧ/ΚΗ Δ/ΝΣΗ :ΤΑΧ. ΘΥΡΙΑΔΑ ΥΠΗΡΕΣΙΑΣ  
ΠΟΛΙΤΙΚΗΣ ΑΕΡΟΠΟΡΙΑΣ  
70360-16610 ΓΛΥΦΑΔΑ

ΠΡΟΣ:ΑΕROCANDIA AVIATION SERVICES  
ΚΩΝΣΤΑΝΤΙΝΟΥ ΠΑΠΑΔΗΜΗΤΡΙΟΥ 33  
ΜΑΡΚΟΠΟΥΛΟ ΑΤΤΙΚΗΣ  
Τ.Κ 19003

E-MAIL: qualitymanager@aerocandia.gr

ΠΛΗΡΟΦΟΡΙΕΣ: Ε.ΕΥΔΑΣ  
ΑΡ. ΤΗΛΕΦ. : 210- 9973560  
E-MAIL: exydas@hcaa.gr

**ΘΕΜΑ: Έγκριση MAINTENANCE ORGANIZATION EXPOSITION (M.O.E)**

ΣΧΕΤ: α) ΑΕROCANDIA ΑΡ.ΠΡΩΤ:ΑΑΣ/QTM/141220-02  
ΥΠΑ/Κ.Γ/42298/15-12-2020

1. Σε απάντηση (α) σχετικού, σας γνωρίζουμε ότι εγκρίνουμε το Εγχειρίδιο Λειτουργίας Φορέα συντήρησης (MAINTENANCE ORGANIZATION EXPOSITION M.O.E) με τα παρακάτω στοιχεία ,όπως αυτό τροποποιήθηκε από τις διορθώσεις που προέκυψαν από την μελέτη του.

Ημερομηνία Έκδοσης	Rev.No	Αριθμός Αναφοράς Εγχειριδίου
07 JANUARY 2010 (ISSUE 1)	REV.37 (17-12-2020)	AEC/ M.O.E

2. Τροποποιήσεις του εγχειριδίου πρέπει να εγκρίνονται από την ΥΠΑ/Δ2/Α.

Με ευθύνη του Δ/ντη Ποιοτικού Ελέγχου ,το ανωτέρω Εγχειρίδιο Λειτουργίας Φορέα συντήρησης (MAINTENANCE ORGANIZATION EXPOSITION M.O.E ) με στοιχεία **AEC/M.O.E ISSUE 1 -07 JANUARY 2010, REV 37 (17-12-2020)** πρέπει να διανεμηθεί στους αποδέκτες που αναφέρονται στον Πίνακα Διανομής αυτού.

Η παρούσα αναθεώρηση συμπεριλαμβάνει και την αναθεώρηση των συμπληρωματικών διαδικασιών **TCCA SUPPLEMENT ISSUE 03-REV.00/15-01-2019.**

**ΑΡ.Ε-ΠΑΡΑΒΟΛΟΥ:36163826095102160017**

**ΚΟΙΝΟΠΟΙΗΣΗ**

- Δ2/Α

Ο  
Αναπληρωτής Διευθυντής  
Διεύθυνσης Πτητικών Προτύπων  
κ.α.α

Dr Γ.ΟΙΚΟΝΟΜΟΠΟΥΛΟΣ

ΑΚΡΙΒΕΣ ΑΝΤΙΓΡΑΦΟ  
Η ΠΡΟΙΣΤΑΜΕΝΗ ΚΕΝΤΡΙΚΗΣ  
ΓΡΑΜΜΑΤΕΙΑΣ ΥΠΑ

Approved Maintenance Organization EL.145.0060

HEAD OFFICE

9 Charilaou Trikoupi Str. 713 06 Heraklion Crete

# Maintenance Organization Exposition

INITIAL APPROVAL BY H.C.A.A

DATE: 26/02/2010

Ref.: HCAA/D2/A/770

REVISION 37 APPROVAL BY H.C.A.A

DATE: 08/01/2021

Ref.: HCAA/D2/A/462

Document Refer. No: AEC/MOE

Issue: 01

Rev: 37

Copy No.: 2

# Maintenance Organization Exposition

AEC/MOE

Revision: 37  
Date: 17/12/2020  
Page: F

## LEP

INTRODUCTION		
A	17-Dec-20	37
B	26-Jun-20	36
C	07-Jan-10	0
D	09-Jan-19	29
E	15-Sep-16	21
F	17-Dec-20	37
G	17-Dec-20	37
H	17-Dec-20	37

PART-1		
1	24-July-19	32
2	29-Mar-18	27
3	11-Jun-18	28
4	17-Dec-20	37
5	24-July-19	32
5a	24-July-19	32
5b	24-July-19	32
6	24-July-19	32
7	24-July-19	32
8	24-July-19	32
8a	24-July-19	32
8b	24-July-19	32
9	24-July-19	32
9a	24-July-19	32
10	24-July-19	32
11	24-July-19	32
12	11-Jun-18	28
13	09-Jan-19	29
14	11-Jun-18	28
15	21-Dec-17	26
16	29-Mar-18	27
17	26-Jun-20	36
18	25-May-17	24
19	11-Jun-18	28
20	11-Jun-18	28
21	26-Jun-20	36
21a	17-Dec-20	37
22	24-July-19	32
23	11-Jun-18	28
24	02-Apr-20	35

PART-2		
1	24-July-19	32
2	24-July-19	32
3	24-July-19	32
4	05-Sep-15	16
5	24-July-19	32
5a	24-July-19	32
6	24-July-19	32
6a	24-July-19	32
6b	24-July-19	32
6c	24-July-19	32

PART-2		
7	24-July-19	32
8	24-July-19	32
9	24-July-19	32
10	24-July-19	32
11	24-July-19	32
12	29-Mar-18	27
13	24-July-19	32
13a	24-July-19	32
14	11-Jun-18	28
15	07-Mar-15	15
16	24-July-19	32
17	24-July-19	32
18	07-Mar-15	15
19	07-Mar-15	15
20	07-Mar-15	15
21	24-July-19	32
22	07-Mar-15	15
23	15-Sep-16	21
24	14-Jan-16	18
25	21-Dec-17	26
26	07-Mar-15	15
27	11-Jun-18	28
28	09-Jan-19	29
29	09-Jan-19	29
30	09-Jan-19	29
31	09-Jan-19	29
32	17-Dec-20	37
33	17-Dec-20	37
34	07-Mar-15	15
35	24-July-19	32
36	03-Feb-17	22
37	03-Feb-17	22
38	03-Feb-17	22
39	03-Feb-17	22
40	03-Feb-17	22
41	03-Feb-17	22
42	03-Feb-17	22
43	03-Feb-17	22
44	24-July-19	32
45	17-Dec-20	37
45a	17-Dec-20	37
46	24-July-19	32
47	09-Jan-19	29
48	03-Feb-17	22
49	03-Feb-17	22
50	03-Feb-17	22

PART-L2		
1	03-Feb-17	22
2	03-Feb-17	22
3	14-Jan-16	18
4	14-Jan-16	18

PART-L2		
5	14-Jan-16	18
6	05-Sep-15	16
7	09-Jan-19	29
8	03-Feb-17	22
9	05-Sep-15	16
10	05-Sep-15	16
11	05-Sep-15	16
12	05-Sep-15	16
13	03-Feb-17	22
14	05-Sep-15	16
15	05-Sep-15	16
16	03-Feb-17	22
17	24-July-19	32

PART-3		
1	24-July-19	32
2	24-July-19	32
3	24-July-19	32
4	24-July-19	32
5	24-July-19	32
6	24-July-19	32
7	09-Jan-19	29
8	24-July-19	32
9	24-July-19	32
10	05-Sep-15	16
11	24-July-19	32
12	24-July-19	32
13	24-July-19	32
14	24-July-19	32
14a	24-July-19	32
15	24-July-19	32
15a	24-July-19	32
16	24-July-19	32
16a	24-July-19	32
16b	24-July-19	32
16c	24-July-19	32
17	07-Mar-15	15
18	11-Jun-18	28
19	11-Jun-18	28
20	24-July-19	32
21	24-July-19	32
21a	24-July-19	32
22	24-July-19	32
23	24-July-19	32
24	12-May-16	19
25	12-May-16	19
26	11-Jun-18	28

PART-4		
1	22-Sep-10	3
2	02-Apr-20	35
3	22-Sep-10	3



400/02/A/452/08-01-2021

PART-4		
4	22-Sep-10	3
5	15-Aug-11	5
6	22-Sep-10	3

PART-9		
9	09-Jan-19	29

PART-14		
5	24-July-19	32
6	24-July-19	32
7	24-July-19	32
8	24-July-19	32
9	24-July-19	32

PART-5		
1	24-July-19	32
2	17-Dec-20	37
3	17-Dec-20	37
4	24-July-19	32
5	14-Jan-16	18
6	14-Jan-16	18
7	14-Jan-16	18
8	17-Dec-20	37
9	17-Dec-20	37
10	28-May-19	31
11	14-Jan-16	18
12	28-May-19	31
13	11-Jun-18	28
14	11-Jun-18	28
15	11-Jun-18	28
16	11-Jun-18	28
17	11-Jun-18	28
18	11-Jun-18	28
19	17-Dec-20	37
20	17-Dec-20	37

PART-10		
1	25-May-17	24

PART-11		
1	14-Jan-16	18
2	14-Jan-16	18
3	14-Jan-16	18
4	14-Jan-16	18
5	14-Jan-16	18
6	14-Jan-16	18
7	14-Jan-16	18
8	14-Jan-16	18

PART-15		
1	26-Jun-20	36
2	26-Jun-20	36

PART-12		
1	28-May-19	31
2	28-May-19	31
3	28-May-19	31
4	28-May-19	31
5	28-May-19	31
6	28-May-19	31
7	28-May-19	31
8	28-May-19	31
9	28-May-19	31
10	28-May-19	31
11	28-May-19	31
12	28-May-19	31
13	28-May-19	31
14	28-May-19	31
15	28-May-19	31
16	28-May-19	31
17	28-May-19	31
18	28-May-19	31

PART-6		
1	30-Mar-12	7

PART-7		
1	30-Mar-12	7

PART-8		
1	06-Feb-19	30
2	06-Feb-19	30
3	06-Feb-19	30
4	06-Feb-19	30
5	06-Feb-19	30
6	06-Feb-19	30
7	06-Feb-19	30
8	06-Feb-19	30
9	06-Feb-19	30
10	06-Feb-19	30
11	06-Feb-19	30
12	06-Feb-19	30

PART-13		
1	21-Dec-17	26
2	21-Dec-17	26
3	21-Dec-17	26
4	21-Dec-17	26
5	21-Dec-17	26
6	21-Dec-17	26
7	21-Dec-17	26
8	21-Dec-17	26
9	21-Dec-17	26
10	21-Dec-17	26
11	21-Dec-17	26
12	21-Dec-17	26
13	21-Dec-17	26

PART-9		
1	09-Jan-19	29
2	09-Jan-19	29
3	09-Jan-19	29
4	09-Jan-19	29
5	09-Jan-19	29
6	09-Jan-19	29
7	09-Jan-19	29
8	09-Jan-19	29

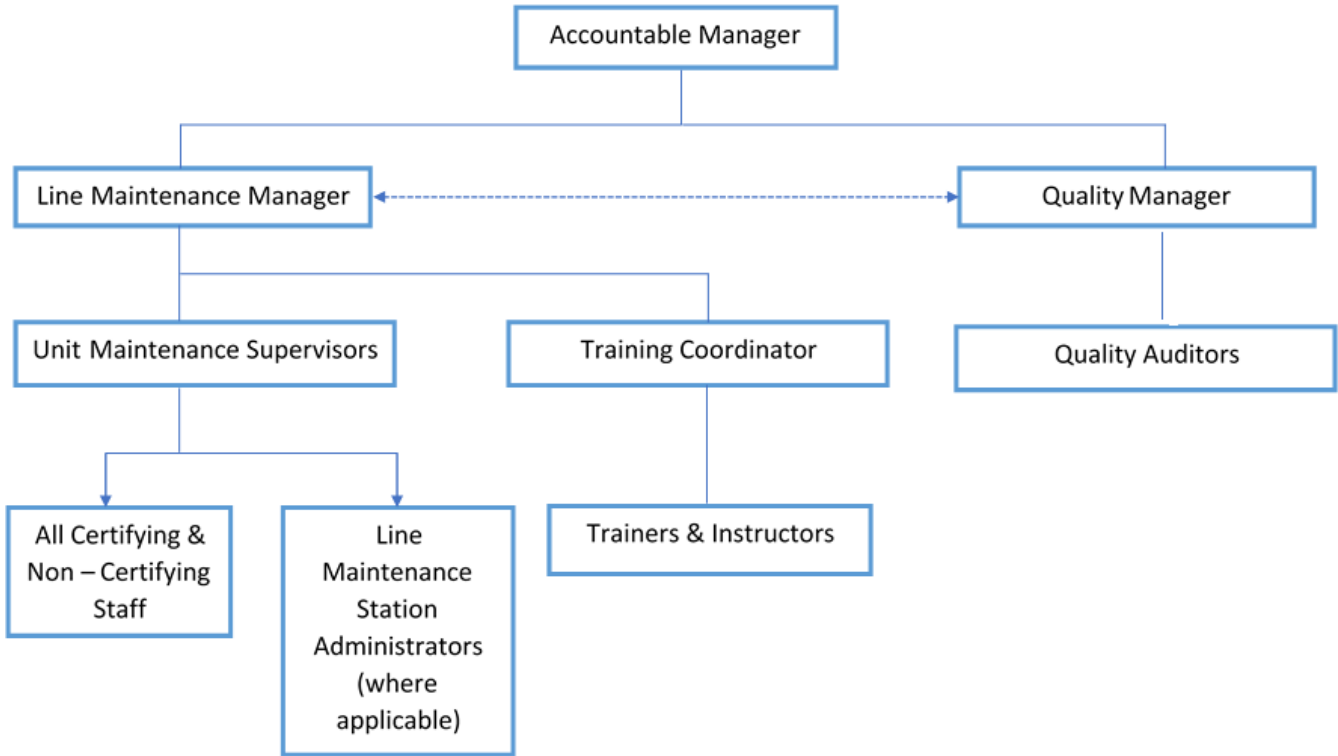
PART-14		
1	24-July-19	32
2	24-July-19	32
3	24-July-19	32
4	24-July-19	32

40A/02/A/452/03-01-2021

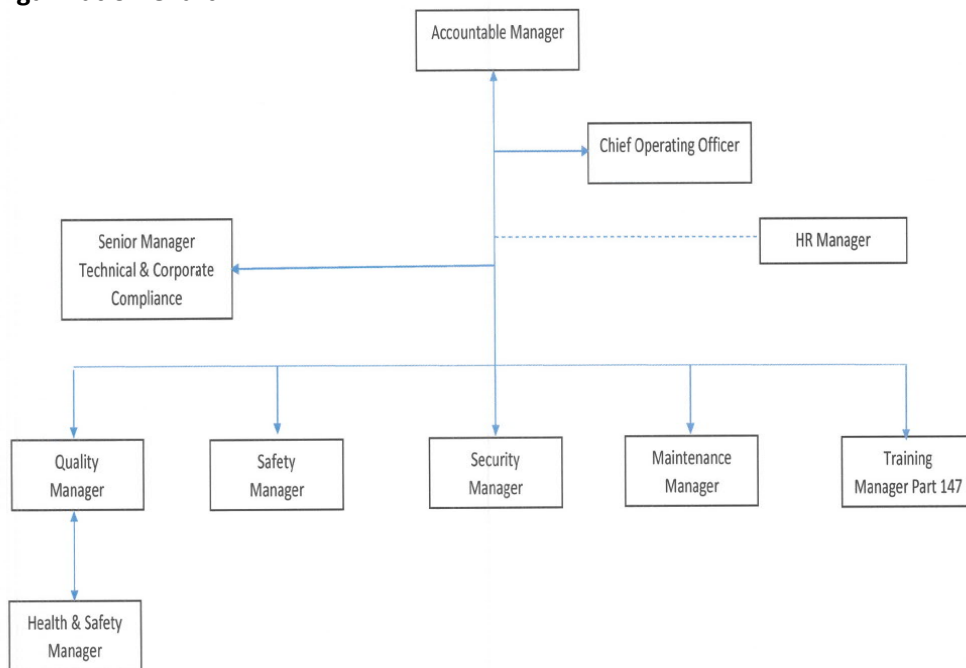


## 1.5 Management Organisation Chart

Ref: 145.A.70 (a) (5)



### 1.5.1 Company Organization Chart



	<h1>Maintenance Organization Exposition</h1>		AEC/MOE	
			Revision:	32
			Date:	24/07/2019
			Page:	1.12

## 1.8 General Description of the Facilities

Ref: 145.A.70 (a) (8)

### 1.8.1 Line Stations – General

Aerocandia Aviation Services has established a Line Station at the relevant locations under its own HCAA Part 145 approval.

### 1.8.2 Aerocandia Aviation Services – Facilities

- At **Markopoulo, Attica**, the main offices are located at the 3<sup>rd</sup> floor.
- At **Heraklion** International Airport, the Managerial offices are located at the 1<sup>st</sup> floor and the engineers offices and stores are located at the basement of the old arrivals building.
- At **Rhodes** International Airport offices and stores are located in the basement of the new terminal.
- At **Chania** International Airport offices and stores are located at the ramp of the main terminal.
- At **Kos** International Airport offices and stores are located at the ramp of the main terminal.
- At **Larnaka** International Airport offices and stores are located at the ramp of the new airport terminal.
- At **Pafos** International Airport offices and stores are located at the ramp of the airport terminal.
- At **Thessaloniki** International Airport offices and stores are located at the ramp of the main terminal.
- At **Athens** International Airport offices and stores are located at the first floor of Building 18 of AIA.
- At **Mykonos** International Airport offices and stores are located in the basement of the new terminal.
- At **Santorini** International Airport offices and stores are located at the ramp of the main terminal.
- At **Corfu** International Airport offices and stores are located at the ramp of the main terminal
- At **Kalamata** International Airport offices and stores are located at the ramp of the main terminal

Stations contact details:

#### MAIN OFFICE

33 K. Papadimitriou St.  
19003 Markopoulo, Attiki  
Greece

Tel: +30 2299 022143

Fax: +30 2299 022145

email: [mcc@aerocandia.com](mailto:mcc@aerocandia.com)

Duty: +30 6974 260335

#### HERAKLION (HER)

Heraklion International Airport  
"N. Kazantzakis"  
71601 Heraklion, Crete, Greece

Tel: +30 2810 397377

Fax: +30 2810 331150

email: [herlm@aerocandia.com](mailto:herlm@aerocandia.com)

Duty: +30 6974 260349

#### RHODES (RHO)

Rhodes International Airport  
"Diagoras"  
85100 Rhodes, Greece

Tel: +30 22410 82519

Fax: +30 22410 82511

email: [rholm@aerocandia.com](mailto:rholm@aerocandia.com)

Duty: +30 6976993593

#### CHANIA (CHQ)

Chania International Airport  
"I. Daskalogiannis"  
73100 Chania, Crete, Greece

Tel: +30 28210 65622

Fax: +30 28210 65622

email: [chqlm@aerocandia.com](mailto:chqlm@aerocandia.com)

Duty: +30 6974 260340

#### KOS (KGS)

Kos International Airport  
"Hippocrates"  
85302 Kos, Greece

Tel: +30 22420 51001

Fax: +30 22420 51001

email: [kgsIm@aerocandia.com](mailto:kgsIm@aerocandia.com)

Duty: +30 6974 260348

#### THESSALONIKI (SKG)

Thessaloniki International Airport  
"Macedonia"  
55103 Thessaloniki, Greece

Tel: +30 2310 475964

Fax: +30 2310 475961

email: [skglm@aerocandia.com](mailto:skglm@aerocandia.com)

Duty: +30 6984 777152

	<h1>Maintenance Organization Exposition</h1>		AEC/MOE	
			Revision:	32
			Date:	24/07/2019
			Page:	1.13

**ATHENS (ATH)**

Athens International Airport  
 "El. Venizelos"  
 19019 Spata, Attika, Greece  
 Tel: +30210 3535284  
 Fax: +30210 3535837  
 email: [athlm@aerocandia.com](mailto:athlm@aerocandia.com)  
 Duty: +30 6984 777153

**LARNAKA (LCA)**

Larnaka International Airport  
 6650 Larnaka, Cyprus  
 Tel: +357 24 008217  
 Fax: +357 24 008218  
 email: [lcalm@aerocandia.com](mailto:lcalm@aerocandia.com)  
 Duty: +357 99 725593

**PAFOS (PFO)**

Pafos International Airport  
 8061 Pafos, Cyprus  
 Tel: +357 26 600558  
 Fax: +357 26 600558  
 email: [pfolm@aerocandia.com](mailto:pfolm@aerocandia.com)  
 Duty: +357 99 725594

**MYKONOS (JMK)**

Mykonos International Airport  
 521 Mykonos, Greece  
 Tel: +30 22890 26304  
 Fax: +30 22890 26304  
 email: [jmklm@aerocandia.com](mailto:jmklm@aerocandia.com)  
 Duty: +30 6984 777154

**SANTORINI (JTR)**

Santorini International Airport  
 84700 Santorini, Greece  
 Tel: +30 22860 33942  
 Fax: +30 22860 33942  
 email: [jtrlm@aerocandia.com](mailto:jtrlm@aerocandia.com)  
 Duty: +30 6984 777151

**KERKYRA (CFU)**

Corfu International Airport  
 491008, Corfu, Greece  
 Tel: +30 226610 33942  
 Fax: +30 226610 33942  
 email: [cfulm@aerocandia.com](mailto:cfulm@aerocandia.com)  
 Duty: +30 6974 260335

**KALAMATA (KLX)**

Kalamata International Airport  
 "Captain Vasilis Konstantakopoulos"  
 24200 Messini, Greece  
 Tel: +30 27210 66038  
 Fax: +30 27210 66038  
 email: [klxlm@aerocandia.com](mailto:klxlm@aerocandia.com)  
 Duty: +30 6983 330764

Concerning the IT infrastructure, all AAS stations (as mentioned above) are equipped with PCs, printers, modem and router with VPN connection feature in conjunction with an access point, uninterruptible power supply device, fax and telephone (landline and 24hr service mobile).

In regards to safety measures, an automated fire suppression system (pipe network, detectors, actuators and extinguishers/sprinklers) is installed in all stations' offices and stores. For a more detailed description, please refer to AAS Operational Health & Safety Manual.

The stores area comprises:

- Bonded Store Area
- Quarantine Store Area
- Goods Inwards Store Area,
- Lubricants Store Area
- Commercial and Special Tool Store Area

All areas are temperature and humidity controlled. Access to the storage facilities is restricted to authorized personnel as per their CSAC, to Quality & Maintenance Manager. The Bonded Store is a self-contained area into the main stores with access through a locked gate and is clearly identified.

The Goods Inwards Store section is a small area near the stores entrance door and has a shelving area clearly marked 'Good Inwards'.

**1.8.3 Hangar Accommodations**

As there are is no Hangar owned or available at any AAS station, where the working environment deteriorates to an unacceptable level in respect of temperature, moisture, hail, ice, snow, wind, light, dust/other airborne contamination, the particular maintenance or inspection tasks will be suspended until satisfactory conditions are re-established.

## 1.9 Organizations Scope of Work

Ref: 145.A.20 & § 145.A.70 (a) (9) & Part 145 Appendix II

### 1.9.1 Aircraft Maintenance (Class A1 Rating)

Category A1 class rating means that the Part-145 approved maintenance organisation may carry out maintenance on the aircraft and any component (including Engines/APUs) only whilst such components are fitted to the aircraft. This rating also covers components that can be temporarily removed for maintenance when such removal is expressly permitted by the aircraft maintenance manual to improve access for maintenance subject to the procedures in this exposition. The limitations referred specify the scope of such maintenance thereby indicating the extent of approval.

As per EASA Part 145.A.75 Aerocandia Aviation Services (the approved organisation) undertakes maintenance in accordance with the applicable approved maintenance programme on the following aircraft models:

CLASS	RATING		CAPABILITY PER LINE STATION													
			Up to and including "A" Checks*													
Aircraft	A1-Aeroplanes above 5.700Kgs		Up to but not including "A" Checks*													
LIMITATION			Up to and including "A" Checks*													
TC holder	Model	Engine Type	BASE	LINE	HER	CHQ	RHO	KGS	SKG	LCA	PFO	ATH	JMK	JTR	CFU	KLX
Boeing	737-300/400/500	(CFM56)	-	X	A	L	A	L	A	A	L	A	L	L	L	L
Boeing	737-600/700/800/900	(CFM56)	-	X	A	A	A	L	A	A	A	A	L	L	A	A
Boeing	Boeing 737-8/-9	(CFM LEAP-1B)	-	X	L	L	L	L	L	L	L	L	L	L	L	L
Boeing	747-200/300	(PW JT9D)	-	X	L	L	L	L	L	L	L	L	L	L	L	L
Boeing	747-200/300	(GE CF6)	-	X	L	L	L	L	L	L	L	L	L	L	L	L
Boeing	757-200/300**	(RR RB211)	-	X	A	L	A	L	L	A	L	A	L	L	L	L
Boeing	757-200/300**	(PW2000)	-	X	A	L	A	L	L	A	L	A	L	L	L	L
Boeing	767-200/300/400**	(GE CF6)	-	X	A	L	L	L	L	L	L	A	L	L	L	L
Boeing	767-200/300**	(PW4000)	-	X	A	L	L	L	L	L	L	A	L	L	L	L
Boeing	767-300**	(RR RB211)	-	X	L	L	L	L	L	L	L	L	L	L	L	L
Boeing	777-200/300	(GE 90)	-	X	L	L	L	L	L	L	L	L	L	L	L	L
Boeing	777-200/300	(PW 4000)	-	X	L	L	L	L	L	L	L	L	L	L	L	L
Boeing	777-200/300	(RR RB211 Trent 800)	-	X	L	L	L	L	L	L	L	L	L	L	L	L
Boeing	787-8/9/10	(RR RB211 Trent 1000)	-	X	L	L	L	L	L	L	L	L	L	L	L	L
Boeing	787-8/9/10	(GE Genx)	-	X	L	L	L	L	L	L	L	L	L	L	L	L
Airbus	A318/A319/A320/A321	(CFM56)	-	X	A	L	A	L	A	A	L	A	L	L	A	A
Airbus	A319/A320/A321	(IAE V2500)	-	X	A	L	A	L	A	A	L	A	L	L	A	A
Airbus	A320/A321	(IAE PW1100G)	-	X	L	L	L	L	L	A	L	L	L	L	L	L
Airbus	A319/A320/A321	(CFM LEAP-1A)	-	X	A	L	L	L	L	A	L	A	L	L	L	L
Airbus	A330	(GE CF6)	-	X	L	L	L	L	L	L	L	L	L	L	L	L
Airbus	A330	(PW4000)	-	X	L	L	L	L	L	L	L	L	L	L	L	L
Airbus	A330	(RR Trent 700)	-	X	L	L	L	L	L	L	L	L	L	L	L	L
Airbus	A340	(CFM56)	-	X	L	L	L	L	L	L	L	L	L	L	L	L
Airbus	A350	(RR Trent XWB)	-	X	L	L	L	L	L	L	L	L	L	L	L	L
Embraer	ERJ-170 Series	(GE CF34)	-	X	L	L	L	L	L	L	L	L	L	L	L	L
Embraer	ERJ-190 Series	(GE CF34)	-	X	L	L	L	L	L	L	L	L	L	L	L	L
MD Douglas	MD-80 Series	(PW JT8D)	-	X	A	L	L	L	L	L	L	L	L	L	L	L
MD Douglas	MD 717-200 <sup>1</sup>	(RRD BR700-715)	-	X	L	L	L	L	L	L	L	A	L	L	L	L
Bombardier	DHC-8-400	(PWC PW150)	-	X	A	L	A	L	A	L	L	A	L	L	L	L
Bombardier	DHC-8-100/200/300	(PWC PW120)	-	X	A	L	A	L	A	L	L	A	L	L	L	L
BAE Systems	BAe 146/AVRO 146-RJ	ALF500 Series	-	X	L	L	L	L	A	L	L	A	L	L	L	L
ATR	ATR 42-200/300 Series	(PWC PW120)	-	X	A	L	L	L	A	L	L	A	L	L	L	L
ATR	ATR 72-100/200 Series	(PWC PW120)	-	X	A	L	L	L	A	L	L	A	L	L	L	L
ATR	ATR 42-400/500/72-212A	(PWC PW120)	-	X	A	L	L	L	A	L	L	A	L	L	L	L